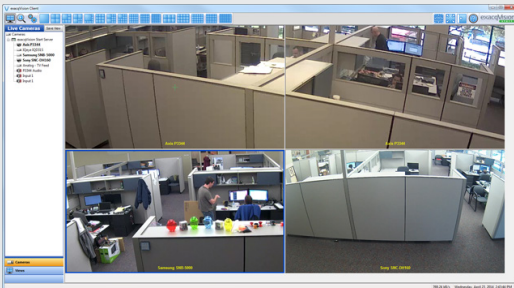
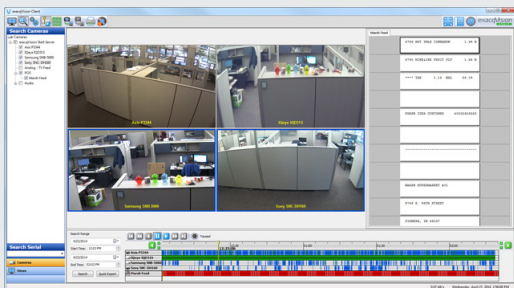


## exacqVision Start Low-cost, Intuitive VMS Software for Stand-Alone Installations

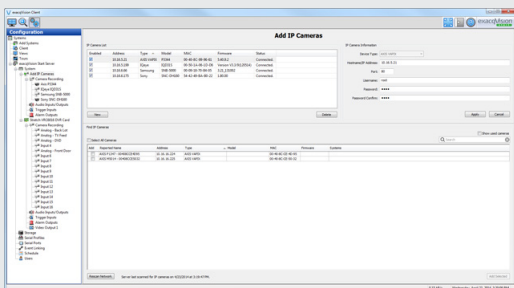
# exacqVision<sup>®</sup> start



Easy-to-Use, Intuitive Interface



Powerful Search Capabilities



Easy Configuration

## EasyConnect

### • Intuitive Video Management System (VMS) Features

- Monitor video and audio in real time
  - Onscreen display of motion and alarm events
  - Instant replay of video and audio events with exacqReplay
- Conduct investigations on recorded video and audio
  - Search across multiple cameras seamlessly
  - Powerful timeline and thumbnail search tools
  - Export video in open-standard video formats or as a self-contained player with tamper protection

### • Ease of Use and Flexibility

- Simple licensing
  - Freely distributed client, browser and mobile apps
  - Simple, per-camera server licenses with no base server fee
- Fast installation
  - Software installs in minutes and requires minimal configuration
  - EasyConnect automatically finds, assigns and addresses certain IP cameras to the network

### • Flexible Deployment

- Deploy server software on Windows and Linux
- Available on pre-configured exacqVision NVRs or install on third-party servers

### • View Video Anywhere with Free Client Software

- Access live and recorded video on Windows, Linux and Mac clients
- Use the free web service application with any modern browser
- Download the free Exacq Mobile app available for iOS, Android, Windows Phone 8

### • Expandable

- Connect up to 16 analog and 16 IP cameras to hybrid exacqVision servers
- Easily add additional IP cameras as needed
- High video throughput with minimal CPU and RAM requirements
- Easily upgradable to exacqVision Pro or Enterprise for future expansion
- Over 2,000 IP cameras and encoders from over 60 manufacturers

### • Constantly Expanding Functionality with Included Software Updates

- Get more video management features without replacing your entire VMS
- Includes 90 days free software updates (three years on exacqVision NVRs)

CLIENT WORKSTATION HARDWARE MINIMUM REQUIREMENTS	TYPICALLY USED FOR VIEWING 1-4 ANALOG CAMERAS
Processor	Intel® Celeron® G540 or higher
RAM	1 GB
Hard Drive	40 GB
Video	Intel HD (on-CPU GPU)
Operating Systems	Microsoft® Windows XP, Apple Macintosh OSX 10.6, Linux Ubuntu 8.04 or higher
VMS SERVER HARDWARE MINIMUM REQUIREMENTS	TYPICALLY LESS THAN 50 MBPS CAMERA TRAFFIC, 1-2 SIMULTANEOUS REMOTE CLIENTS
Processor	Intel® Atom® D525 1.8 GHz or higher
RAM	2 GB
Hard Drive	60 GB (OS) + 250 GB (video) > 15 MBps non-sequential write
Operating System	Microsoft® Windows 7 Pro, Microsoft Server 2003, Linux Ubuntu 10.04 or higher
NIC	1Gbps
WEB BROWSER ACCESS	
Compatibility	Internet Explorer, Firefox, Safari, Opera, Chrome
MOBILE DEVICE ACCESS	
Compatibility	iOS, Android, Windows Phone 8

exacqVision Start VMS Software is available on exacqVision servers:

exacqVision **LC-Series**



## Related Products



exacqVision Hybrid &  
IP Camera Servers



exacqVision Professional  
VMS Software