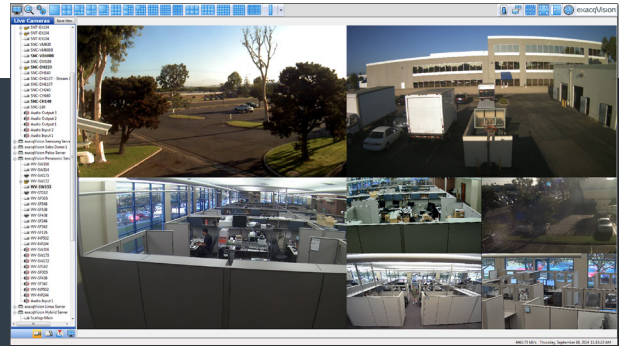


exacqVision LC-Series IP & Hybrid Appliance

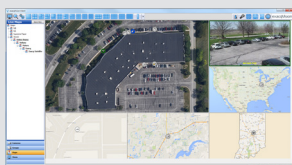


- **All-in-One IP Solutions**
 - Record IP cameras, encoders and analog cameras
 - Available in hybrid and IP NVR models
 - View live and recorded video through free exacqVision client application
- **Connect up to 32 Cameras Per Appliance**
 - Connect up to 16 analog cameras and 16 IP cameras per appliance
 - Compatible with thousands of IP camera models
 - Continuously record up to 100 Mbps of video
- **Powerful, Easy-to-Use VMS Included**
 - Pre-loaded with exacqVision Start VMS software that does the following:
 - Auto detects IP cameras for quick setup
 - Easily add additional IP cameras, up to 16 total
 - Continuous motion, time or alarm-based recording configurable per camera
 - Search recorded video with a timeline or graphical thumbnail search
 - Easily control PTZ cameras
 - Export audio, video and pictures to be easily e-mailed or saved
 - View an instant replay of video from any camera with exacqReplay
- **Optional Input/Output Module**
 - Add configurable trigger inputs and outputs with an optional external USB I/O module
- **View Video Anywhere with Free Client Software**
 - Select the interface that works best for you
 - Access live and recorded video on Windows, Linux or Mac PCs
 - Use the free web service application in any modern browser
 - Download the free Exacq Mobile app available for iOS, Android, Windows Phone 8 and Kindle Fire
- **3-Year Warranty**
 - Includes a 3-year hardware warranty
 - 3 years of unlimited software updates included
- **Easily Upgrade to exacqVision Pro VMS Software**
 - Use appropriate part number to automatically upgrade analog licenses and 4 included IP licenses
 - Simply add IP addresses as needed

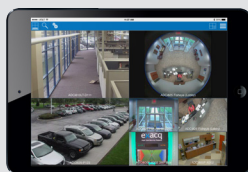
exacqVision **LC-Series**

ANALOG SETTINGS		IPS	HYBRID
Inputs			8/16
Compression			H.264
Frame Rate			240/480 (NTSC) 200/400 (PAL)
Alarm Inputs		Up to 48 (Optional External)	Up to 48 (Optional External)
Alarm Outputs		Up to 20 24 TTL, 6 Relay (Optional External)	Up to 20 24 TTL, 6 Relay (Optional External)
Analog Outputs			1 multiplexed
Audio Inputs			8/16
IP SETTINGS		IPS	HYBRID
Maximum IP Cameras		16	16
Included IP Licenses		4	4
SERVER		IPS	HYBRID
Pre-Loaded VMS Software		Start (standard), Professional, Enterprise (optional)	Start (standard), Professional, Enterprise (optional)
Typical Video Storage Rate (Mbps)		100 Mbps	100 Mbps
Local Client Display Rate (FPS)		150 @ HD resolution 600 @ analog resolution	150 @ HD resolution 600 @ analog resolution
Maximum Hard Drives		1	1
Maximum Storage		12T B	12TB
Monitor Output		HDMI, VGA	HDMI, VGA
Operating System		Ubuntu Linux 14.04	Ubuntu Linux 14.04
CPU		Intel Celeron	Intel Celeron
RAM		4 GB	4 GB
NIC		2 x 1 Gbps	1 x 1 Gbps
USB		6 (2 front, 4 rear)	6 (2 front, 4 rear)
Keyboard & Mouse		Included	Included
GENERAL		IPS	HYBRID
Dimensions		10.9" x 16.9" x 3.5" 27.7 x 42.9 x 8.9 cm	10.9" x 16.9" x 3.5" 27.7 x 42.9 x 8.9 cm
Weight		14 lbs. 6.4 kg	14 lbs. 6.4 kg
Regulatory		CE, FCC, cULus, UL Listed	CE, FCC, cULus, UL Listed
Power & Heat		40 Watts/135 BTU/h (Typical) 60 Watts/200 BTU/h (Max)	45 Watts/150 BTU/h (Typical) 70 Watts/240 BTU/h (Max)
Operating Temperature		40° - 95° F 4.5° - 35° C	40° - 95° F 4.5° - 35° C

Related Products



exacqVision VMS Software



Exacq Mobile App



exacqVision
E-Series Encoders



exacqVision A-Series
hybrid NVR



exacqVision Surveillance
Keyboard

www.exacq.com